

# **StartUp PC Tool**

## **User Manual**



## Revision

---

Release date of version 1.0: Sep. 2020

- Initial distribution

## Terms of Use

- This manual is created based on the present. The details on this manual may be changed without prior notice.
- This manual is created under the assumption that the device has all options. For detailed information on available options, contact the local distributor, or refer to our Web site (<http://www.m3mobile.net/>).
- M3 Mobile does not have any legal responsibility for any performance problem that may occur when a user uses an application that is supplied by a third party.
- M3 Mobile does not have any legal responsibility for any performance degradation or compatibility problem that may occur because of the user's mistake or negligence.
- M3 Mobile does not have any legal responsibility for copyright or patent breach by the user.
- M3 Mobile can request all or part of the applications developed by a user or a third party. The request is for the improvement of the user environment or device performance.
- This manual may include technical or editing errors.

## Copyright

Copyright © 2020 M3 Mobile Co., Ltd.

This manual is protected under international copyright laws. No part of this manual may be reproduced, distributed, translated, or transmitted in any form or by any means, electronic or mechanical, including photocopying, recording, or storing in any information storage and retrieval system, without the prior written permission of M3 Mobile.

## Introduction

M3 Mobile StartUp is an optimized tool for deploying the same settings as Wi-Fi and more to M3 Android enterprise mobile devices.

StartUP PC tool simplifies the creation and enrollment of complex MDM solutions and application settings as well as essential settings such as display, volume, network, and countries.

Barcode scanning makes it easy to deploy to a few, hundreds or even thousands of Android devices, and minimizes additional input for setup, making it easy for any organization to do business.

You can also modify and distribute the settings to the device without a PC, enabling immediate response in the field.

## Main function

- Build an environment for registering your device in an MDM solution.
- You can disable the GMS Package so that end users do not use applications such as Google chrome, Gmail, maps, and YouTube.
- Add settings for Wi-Fi to create an environment where you can use the network without any additional operations.
- We can help you automatically install applications such as business programs used by your enterprise.

## Related Documents

- M3 Android Application Manual (<http://www.m3mobile.net/download/file/743>)
- SOTI with M3 StartUp User Manual (<http://www.m3mobile.net/download/file/746>)

## Prerequisites

The following software must be prepared and installed to using StarUp PC:

- Windows 7, 10 (English)

# Table of Contents

---

## Contents

Contents .....	5
1 Version Information .....	6
2 How to install.....	6
3 PROFILE (Before login) .....	6
4 PROFILE (After login) .....	7
5 StartUp Admin Login .....	8
6 Settings.....	8
6.1 Wi-Fi Access Point .....	9
6.2 Wi-Fi Preference .....	11
6.3 Wi-Fi Remove .....	12
6.4 APN.....	12
6.5 File Download .....	13
6.6 Install APK.....	13
6.7 Time Setting .....	14
6.8 Application Setting.....	15
6.9 GMS Package .....	15
6.10 Enroll a device owner .....	16
6.11 ETC.....	16
7 Export Barcodes.....	18

## 1 Version Information

OS version information and application version information for devices compatible with StartUp PC are as follows.

Model	Restriction
StartUp Application for Android	App version higher than v3.3.0
SM15	OS higher than Oreo v.2.3.4
UL20	OS higher than Pie v.2.4.5
SL10	OS higher than Oreo v.2.1.0
SL10K	OS higher than Oreo v.2.1.0

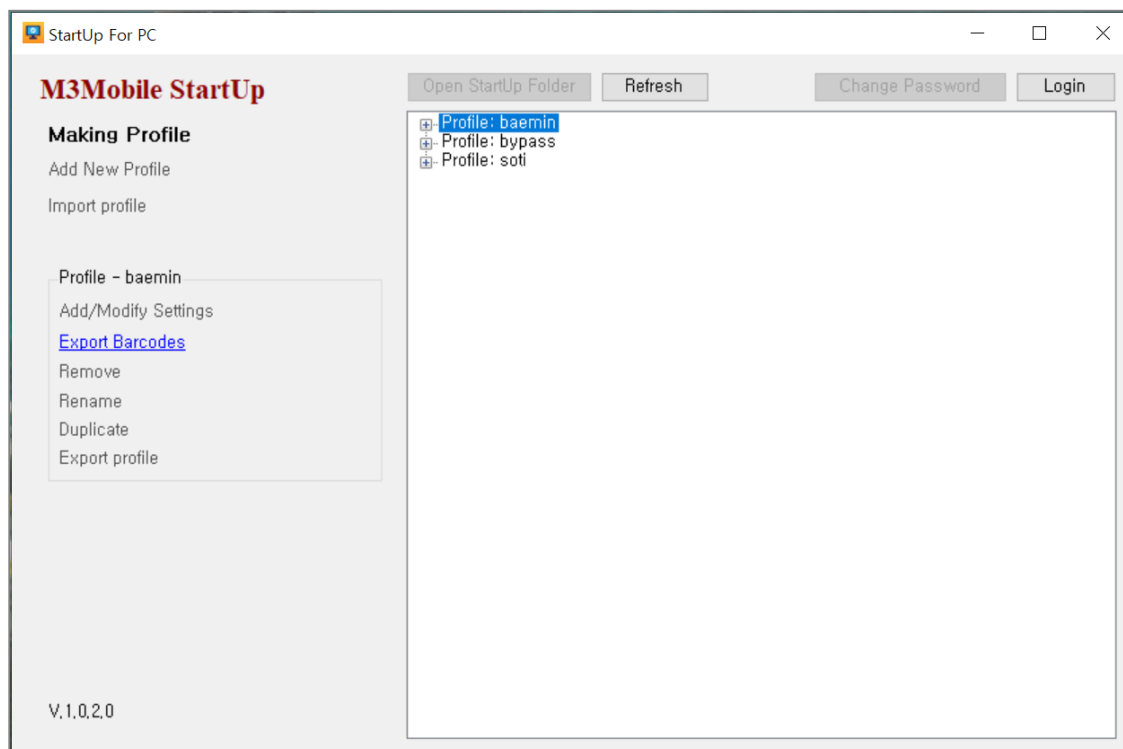


## 2 How to install

You can download the StartUp tool from our ITC(M3 Mobile Information & Technology Center) homepage(<http://itc.m3mobile.net/>).

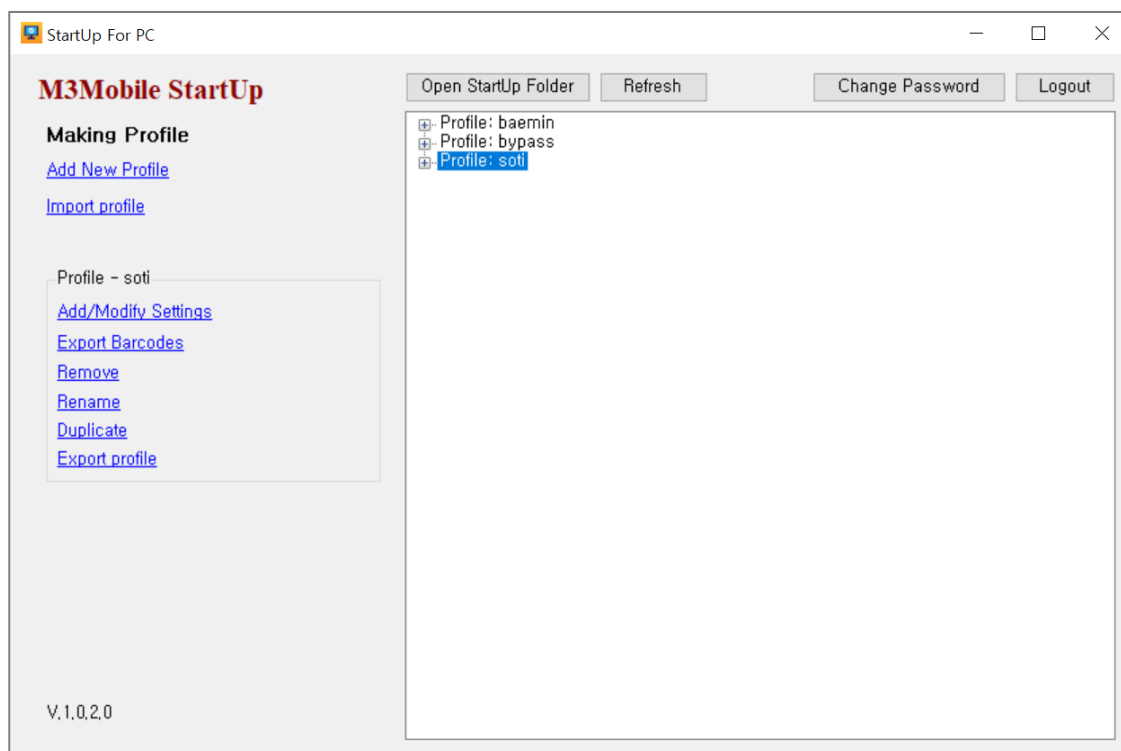
- Log in to the ITC homepage -> Download list -> Applications -> StarUp PC

## 3 PROFILE (Before login)



- This is the first screen that appears when you start the StartUp PC program.
  - ✓ When you log in as administrator, the settings menus are active.
  - ✓ Only 'Export Barcodes' menu is available before login.The Profile selected in the 'Export Barcodes' menu can be printed as Barcode.

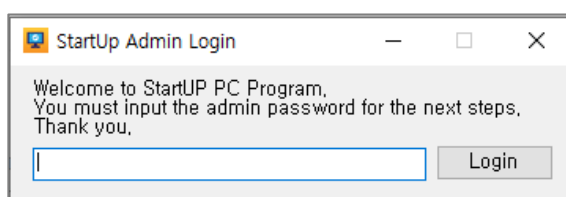
## 4 PROFILE (After login)



- Profile after admin login
  - ✓ After Login you can create and edit Profile.
  - ✓ Add New Profile: Create a profile with the name you want.
  - ✓ Import Profile: You can import the file 'StartUp.Json' created with the StartUp application on your device by copying it to your PC.
- Profile Management
  - ✓ You can edit Profile by selecting the Profile listed on the right screen.
  - ✓ Add/Modify Settings: Adds or edits settings to the selected Profile.
  - ✓ Export Barcodes: Prints the selected Profile as Barcodes.
  - ✓ Remove: Remove Profile.
  - ✓ Rename: Modify the name of the Profile.
  - ✓ Duplicate: Duplicate the selected Profile.
  - ✓ Export Profile: Export the selected Profile to the specified location.

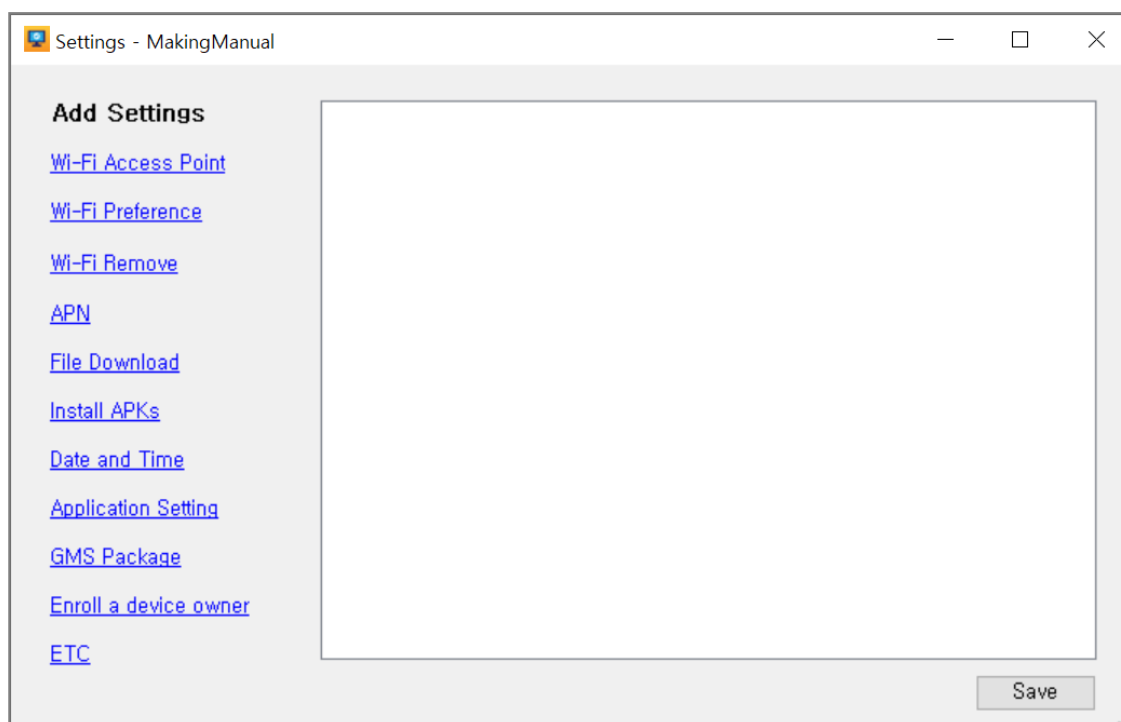
- Others
  - ✓ Open StartUp Folder: Open the folder where the profile of the Json file is stored.
  - ✓ Refresh: Refresh the StartUp Folder to update the folder's Json information and the profile contents of the StartUp PC.
  - ✓ Change Password: Change the Login password. The password is encrypted and stored in the StartUp folder with the StartUP\_\_Setting.json file.
  - ✓ Log-Out: Returns the Profile to an uneditable state.

## 5 StartUp Admin Login



- Login
  - ✓ You can enter Admin Mode by Login.
  - ✓ Default Password: 'mobile'

## 6 Settings





- Add Settings
  - ✓ Wi-Fi Access Point: Set up a wireless LAN.
  - ✓ Wi-Fi Preference: Set detailed wireless LAN settings for common use.
  - ✓ Wi-Fi Remove: You can delete the Wi-Fi settings that are set on your device.
  - ✓ APN: Setting Access Point Name for Network.
  - ✓ File Download: You can download files uploaded to HTTP to your device.
  - ✓ Install APK: APK files can be installed in this menu.
  - ✓ Date and Time: You can set the date and time and the NTP server.
  - ✓ Application Setting: You can set the automatic execution and deactivation of the application.
  - ✓ GMS Package: You can disable the GMS package.
  - ✓ Enroll a device owner: You can set Device Owner.
  - ✓ ETC: Display, Sleep, Location, Language, Launcher Setting, Bypass setup wizard

## 6.1 Wi-Fi Access Point

The screenshot shows a window titled "Wi-Fi Access Point" with the following settings:

- Wi-Fi:** Auto on (dropdown)
- Access Point Settings:** Settings enable (checked)
- SSID:** QA\_TEST
- Security:** WPA/WPA2 PSK (dropdown)
- Password:** 12345678
- 802.1 EAP:** EAP method: None (dropdown)
- Phase 2 authentication:** None (dropdown)
- CA certificate:** Please select (dropdown)
- Domain:** (empty text box)
- Identity:** (empty text box)
- Anonymous identity:** (empty text box)
- Static IP Setting:** (unchecked)
- Static IP:** (empty text box)
- Subnet Mask:** (empty text box) (0~32 Integer Value)
- Gateway:** (empty text box)
- Domain Name Server:** (empty text box)
- Proxy:** None (dropdown)
- Proxy hostname:** (empty text box)
- Proxy port:** (empty text box)
- Bypass proxy for:** (empty text box)

A "Save" button is located at the bottom center of the window.

- Wi-Fi Access Point Settings
  - ✓ Wi-Fi Auto on: Set the Wi-Fi state at device boot time.  
None: Keep the Wi-Fi setting before rebooting the device.

Auto On: After rebooting the device, always set Wi-Fi On.

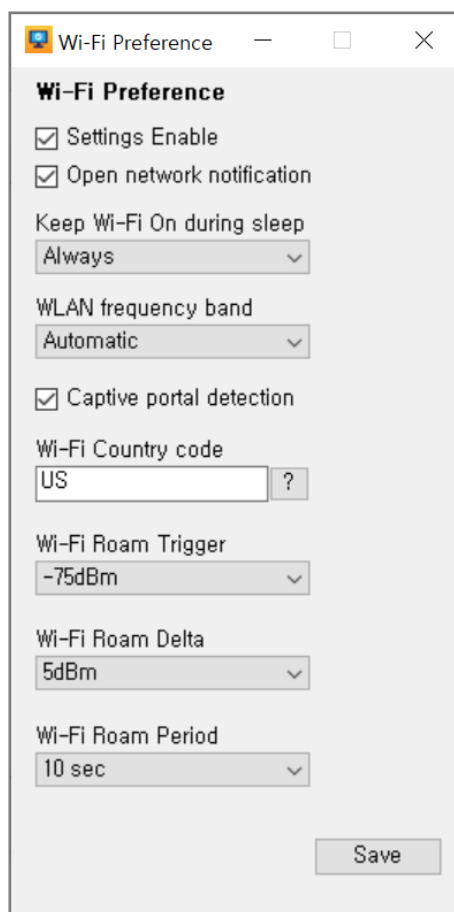
Auto Off: After rebooting the device, always set Wi-Fi Off.

- ✓ Wi-Fi Settings enable: Select whether to apply the settings.
- ✓ SSID: Access to SSID(Be careful of Upper/Lower case letter.)
- ✓ Security: Set up a security approach. Supports WEP, WPA/WPA2 PSK and EAP. If you select EAP, the 802.1 EAP entry is active.
- ✓ Password: Input PW for the AP
- ✓ 802.1 EAP: Depending on your environment, you can use PEAP in EAP Method.
- ✓ Static IP Setting: Enable Static IP setting.
- ✓ Static IP: Input Static IP address
- ✓ Subnet Mask: Input Subnet Mask (0~32)

Notation	Netmask
0	0.0.0.0
8	255.0.0.0
16	255.255.0.0
24	255.255.255.0
25	255.255.255.128
32	255.255.255.255

- ✓ Gateway: Input Gateway address.
- ✓ Domain Name Server: Input DNS address.

## 6.2 Wi-Fi Preference

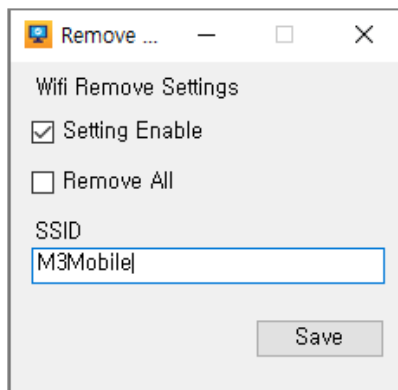


### ● Wi-Fi Preference

- ✓ Set detailed wireless LAN settings for common use.
- ✓ Open network notification: Notify you when high-quality public network is available.
- ✓ Keep Wi-Fi On during sleep: Set how long your device will remain Wi-Fi On during Sleep status.
- ✓ WLAN frequency Band:
  - Automatic: Select 2.5Ghz or 5Ghz to connect.
  - 5Ghz only: Use only the 5Ghz band.
  - 2.5Ghz only: Use only the 2.5Ghz band.
- ✓ Captive portal detection: Specify whether to detect a Wi-Fi network that must be logged in to a webpage before allowing Internet access.
- ✓ Wi-Fi Country code: Set the Country.
- ✓ Roam trigger: If the current AP's signal strength becomes weaker than the Roam trigger when moving, search for the AP that is higher than the minimum Roam delta value.

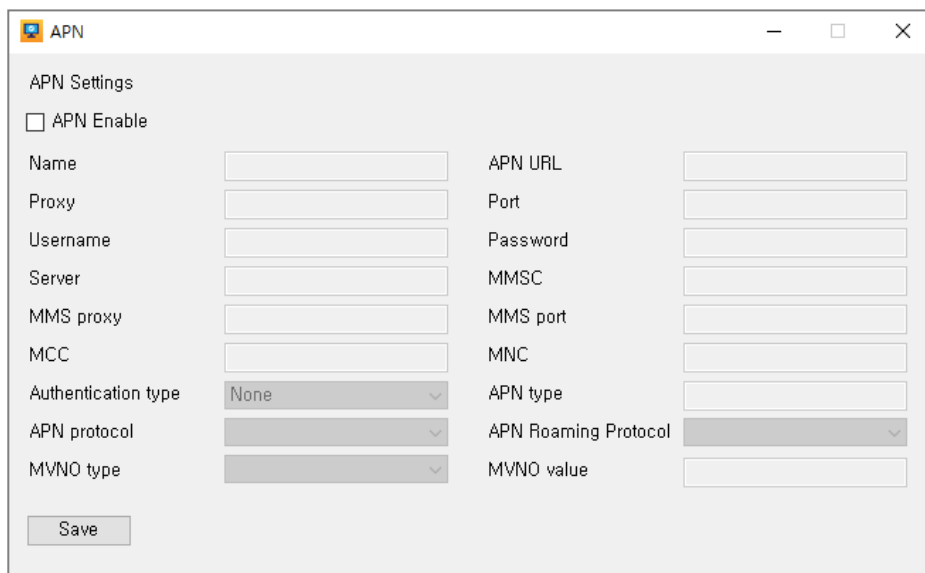
- ✓ Roam delta: When the Roam trigger is enabled, it searches for APs that are at least Roam delta values stronger than the current AP's strength before connecting to a new AP.
- ✓ Roam period: Collect RSI scan data during the Roam period before roaming.

### 6.3 Wi-Fi Remove



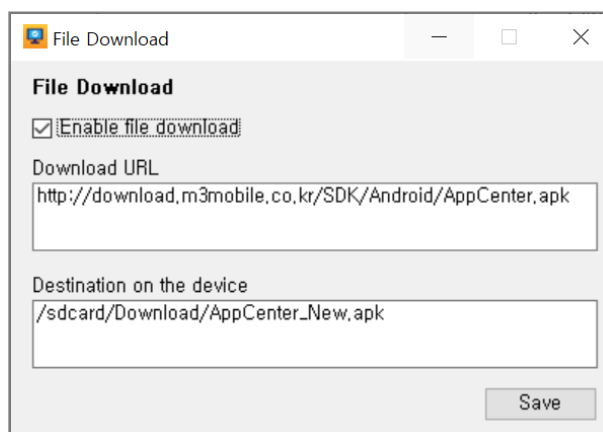
- Wi-Fi Remove: Remove the Wi-Fi information stored on your device.
  - ✓ Settings enable: Check to remove access point.
  - ✓ Remove All: Remove all Wi-Fi information stored on your device.
  - ✓ SSID: Remove Wi-Fi information with a specific SSID.

### 6.4 APN



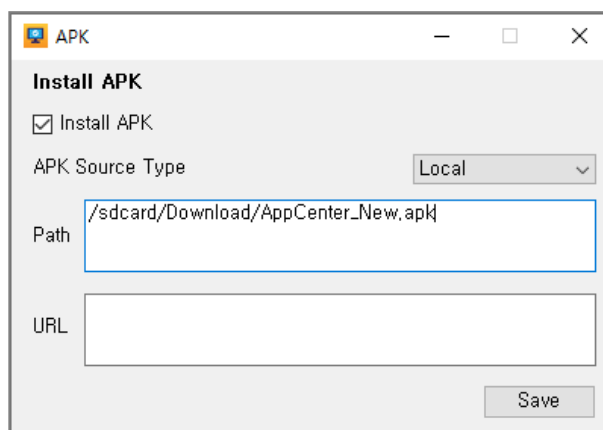
- APN Settings
  - ✓ Settings that enter the information required for data communication on the device.
  - ✓ Each mobile carrier provides a different setting value, so please enter the appropriate setting for that mobile carrier.
  - ✓ Mandatory information: Name, APN, MCC and MNC.

## 6.5 File Download



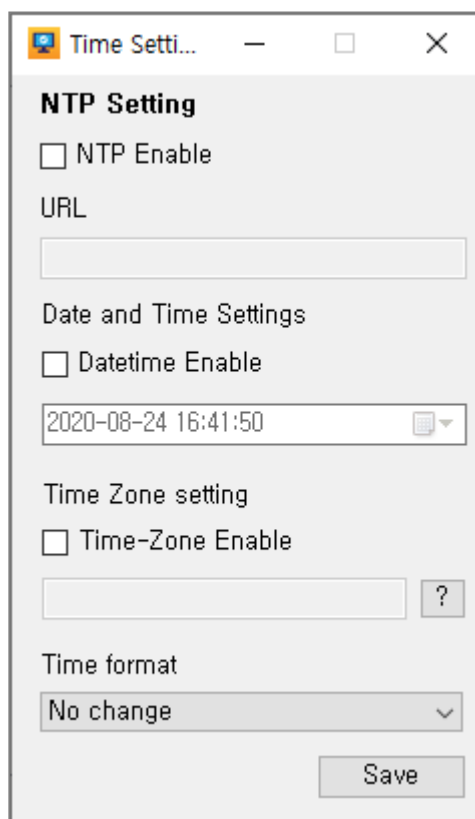
- File Download
  - ✓ Enable File Download: Check to use download function.
  - ✓ Download URL: Input correct URL that you want to download. Valid only for direct download and supports http protocol.
  - ✓ Destination on the device: Select the destination folder on your device.

## 6.6 Install APK



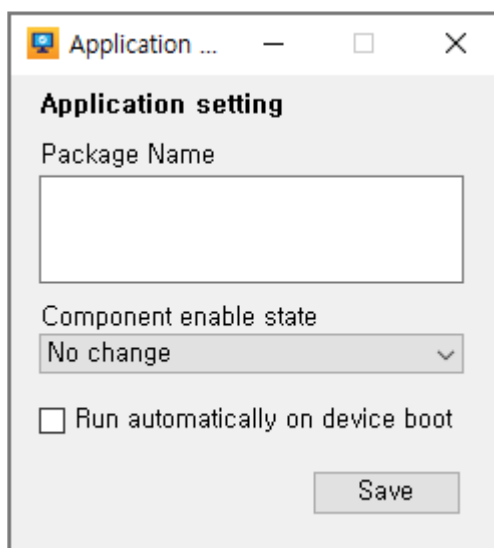
- Install APK
  - ✓ Enable Install APK: Check to use an installation (or download and install) APK.
  - ✓ APK Source Type
    - Specify the type of APK file to install. Only one of the two types will be installed.
    - Local: Input Local if you want to download and install.
    - URL: Input URL if you want to download and install.
  - ✓ Path: Specify the storage location inside the device that has the APK to install.
  - ✓ URL: Specify the location of HTTP where the APK to install exists.

## 6.7 Time Setting



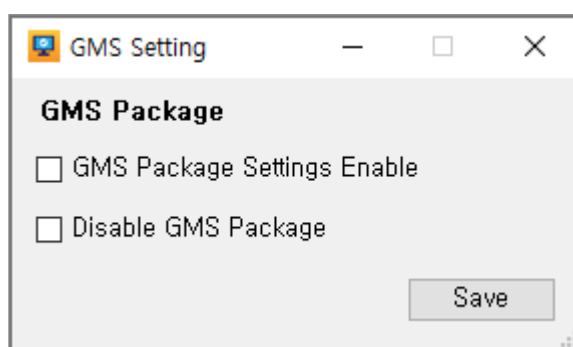
- Date and Time
  - ✓ NTP URL: Import time information from NTP URL and apply it to your device.
  - ✓ Date and Time: Manually specify a date and time to apply to your device.
  - ✓ Time Zone Setting: Specify the device time zone by setting it to the desired Time-Zone.
  - ✓ Time format
    - No Change: Do not change the Time format set on the current device.
    - Use 12-hour format: Display the time in 12-hour format.
    - Use 24-hour format: Display the time in 24-hour format.

## 6.8 Application Setting



- Application Setting
  - ✓ Package Name: Input the Package Name you want to set up and make two settings below.
    1. Automatically start each time the device boots
    2. Disable the application
  - ✓ Component enable state
    1. No Change: Keep current state.
    2. Enable: Enable the application to make it available.
    3. Disable: Disable the application to prevent the user from using it.
  - ✓ Run automatically on device boot: Run automatically when checked.

## 6.9 GMS Package



- GMS Settings(SM15/UL20 GMS OS Only)
  - ✓ Disable GMS Package: All applications corresponding to the GMS package will be disabled when checked.
  - ✓ Apply to the next boot, and the StartUp notification indicates progress. Do not operate your device until it is complete.

## 6.10 Enroll a device owner

- Enroll a device owner(SM15/UL20 GMS OS Only)
  - ✓ Setting device owner : Check to set the device owner.
  - ✓ Auto Fill to SOTI AE : If you use SOTI AE as Device Owner, the package/class name will be set when checked.
  - ✓ The device to which you apply the settings must read the QR code in order in the Setup wizard state after factory initialization.
  - ✓ See the “SOTI with M3 StartUp User Manual” document for detailed setup examples. (Download link: <http://www.m3mobile.net/download/file/746>)

## 6.11 ETC



- Display Settings

- ✓ Display Settings Enable: Check to make settings for the display.
- ✓ Auto Brightness: Check to enable Auto Brightness.
- ✓ Brightness Step: Enter display brightness step between 0 and 255.
- ✓ Display Auto Rotate: Check to enable display auto rotation.
- ✓ ScreenLock Disable: Check to disable screen lock.
- ✓ Sleep: Set the auto sleep time.
- ✓ Policy control: Set the status bar, navigation bar to show or hide.

Controllable O: possible X: impossible	SM15	UL20	SL10/SL10K
Status bar	O	O	O
Navigation bar	X	O	O

- ✓ Battery percentage: Display the remaining battery capacity of the status bar as a percentage.
- ✓ Screen saver: Set your screen saver.

- Volume Settings

- ✓ Volume Settings Enable: Check to adjust the volume.
- ✓ Vibrator Enable: Check to enable vibration mode.
- ✓ Media Volume: Media volume setting
- ✓ Ringtone Volume: Ringtone volume setting

- Alarm Volume: Alarm volume setting

- Keyboard Settings

- ✓ Show virtual keyboard: Check to see the virtual keyboard when the hardware keyboard is connected.
- ✓ Keyboard control notification: Display alerts for enabling/disabling the keyboard.

- Language Settings

- ✓ Language: Set the language of your device.

- Launcher Settings

- ✓ Launcher Settings Enable: Check to enable launcher settings
- ✓ Default launcher: Enter the package name to change the default launcher.

- Location Settings

- ✓ Location mode: Change the location mode.

- NFC Settings

- ✓ NFC Auto On: Check to enable NFC.
- ✓ Android Beam Auto On : Check to enable Beam.

- OTA Settings (SM15/UL20 only)
  - ✓ OTA URL: Enter a valid remote URL to make changes.
- Airplane Mode: Check to enable airplane mode.
- Bluetooth status: Bluetooth can be enabled/disabled.
- Setup after reboot: Uncheck to apply the settings of StartUp without reboot. When unchecked, all settings are applied to the Backward button on the main screen.
- Bypass setup wizard: Check to bypass setup wizard (the initial settings may be different for devices that do not perform setup wizard).
- Unknown source(SM15 Android 7.1 Only): Check to allow installation of application from unknown source.

## 7 Export Barcodes



- **Export Barcodes**

- ✓ **Barcodes:** This is a barcode that can be recognized by the StartUp application for Android devices.
- ✓ **Memo:** Enter notes to leave when making PDF documents. (Only English is allowed.)
- ✓ **PDF:** Save the barcode and notes as PDF.

<Result: Manual\_Test.pdf>

